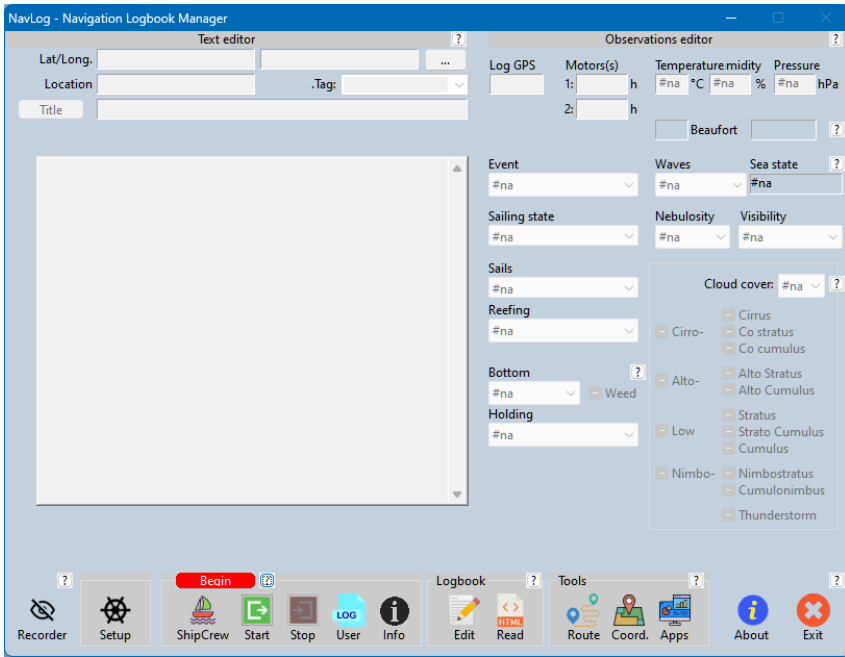
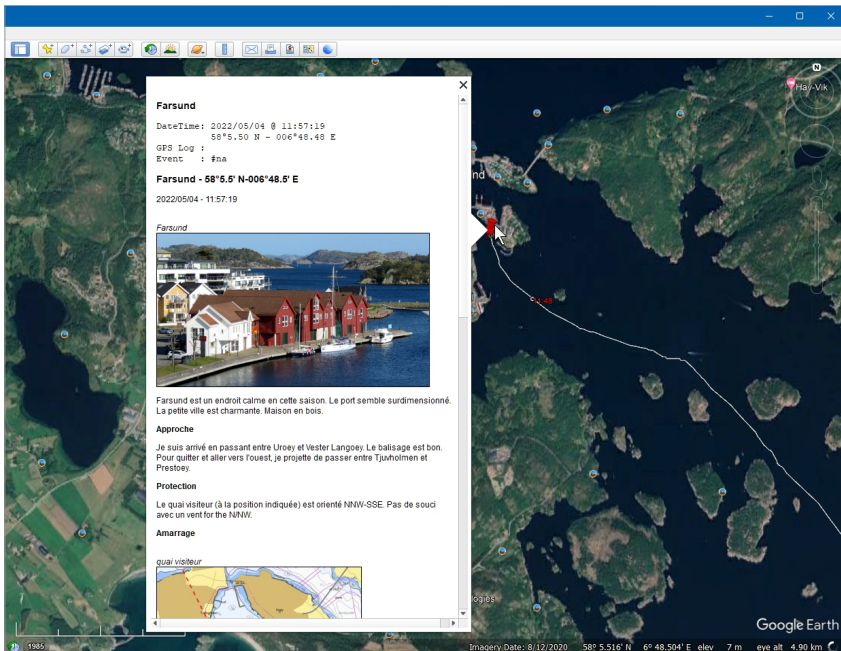


NavLog Introduction



Main features and benefits

- Forget uneasy and unpleasant Logbook maintenance
- Automatic Logbook creation from the NMEA data flow
- Easy personalization (text, images and Internet links)
- Same information in Google Earth, OpenCPN and eBook
- Compatible with OpenCPN navigation software (GPX layer)
- Publishing as an eBook (ePub) and PDF
- Multi-ships profiles
- Crew database & On watch crew management
- Application Launcher
- Conversion of GPX track to routes (OpenCPN formats)
- Coordinates format conversion
- NavLog data files archieving
- Track Log Points named by time or shallow depth



Prerequisites

- Microsoft Windows
- NMEA input : TCP/IP
- 7-Zip

Recommended software

- Calibre (eBook manager)
- Google Earth
- OpenCPN (charting software)
- Franson GpsGate (NMEA in/out)
Ex: 2.60.402 (free)

Optional software

- Notepad++ (text editor)
- zyGrib (Grib download)
- Greenshot (screen capture)

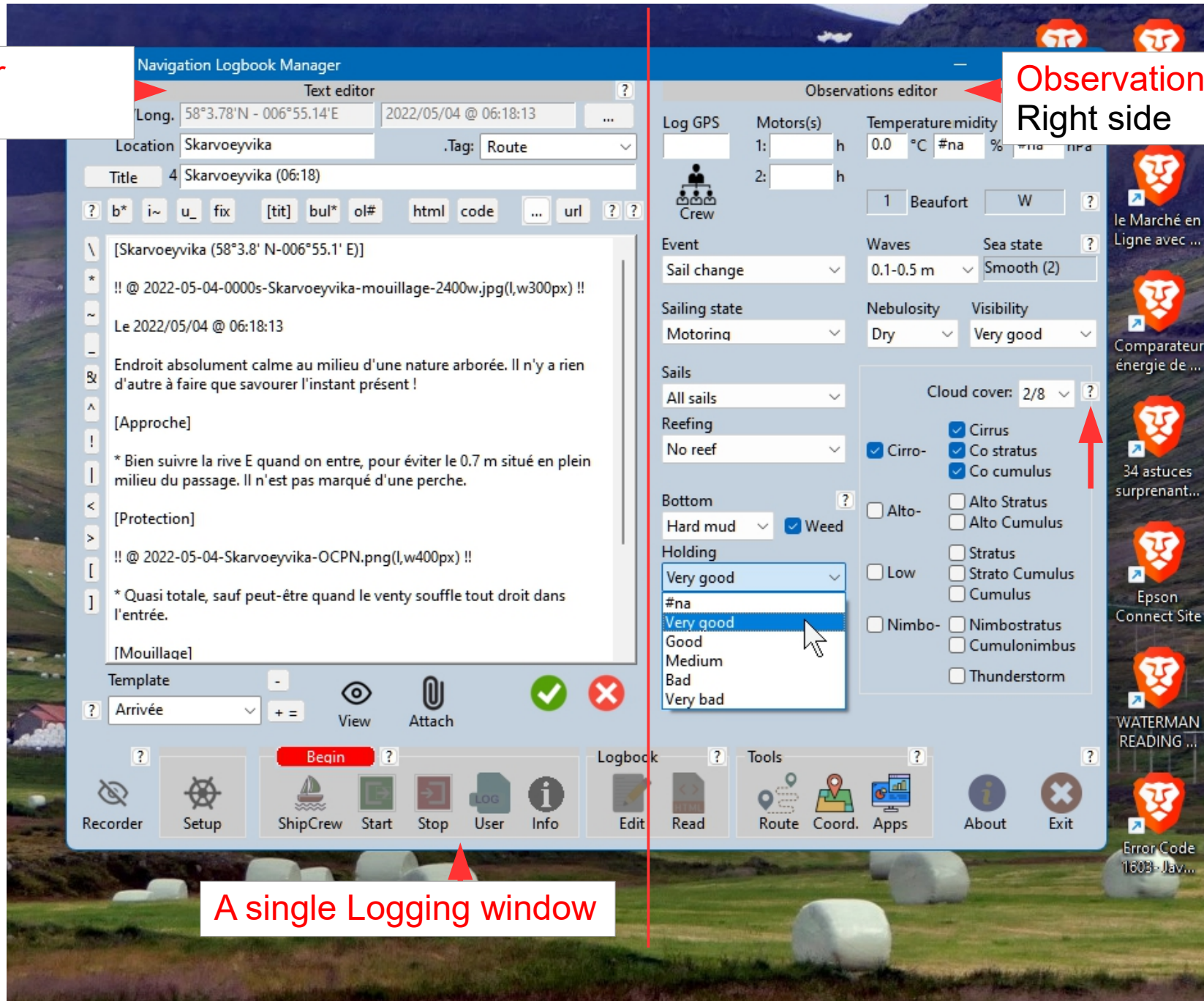
More useful software...

- Fastone Image Viewer
- Advanced File Renamer

NavLog main window

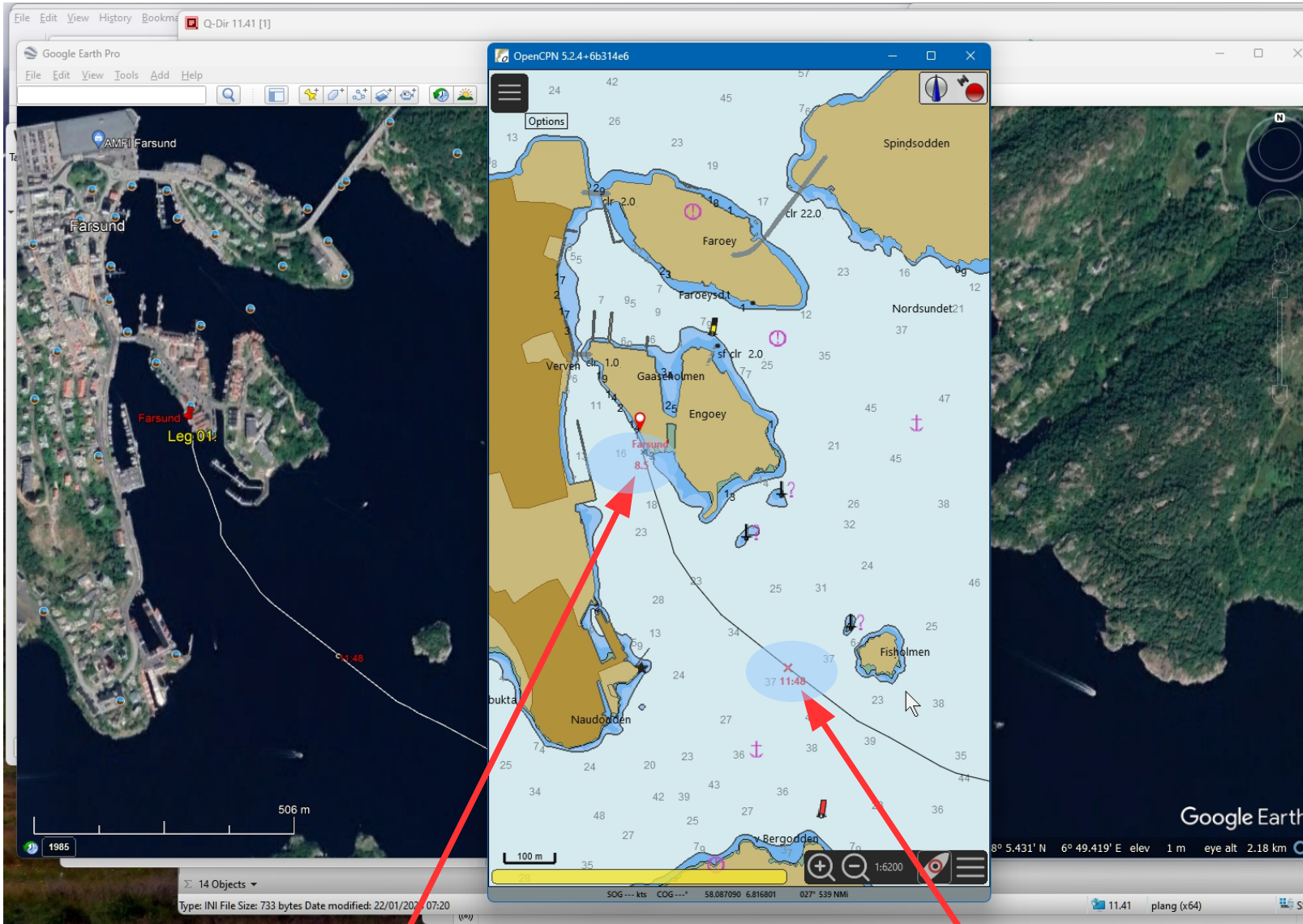
Text editor
Left side

Observation editor
Right side



A single Logging window

Auto-recorded Log Points & Track



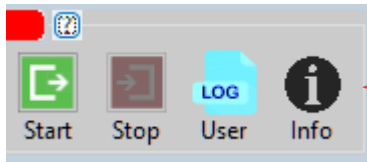
All recorder LPs
⇒ are clickable
⇒ show NMEA data

OpenCPN:
GoogleEarth:
⇒ Same Track
⇒ Same Logbook info

Shallow depth ⇒ track looks like a sounding line
A Log Point at every predefined distance interval.
⇒ the LogPoint name is the depth

Not a shallow depth ⇒ track as a time line
A Log Point at every predefined time interval
⇒ the LogPoint name is the time (hh:mm)

User Log Points (4 kinds)



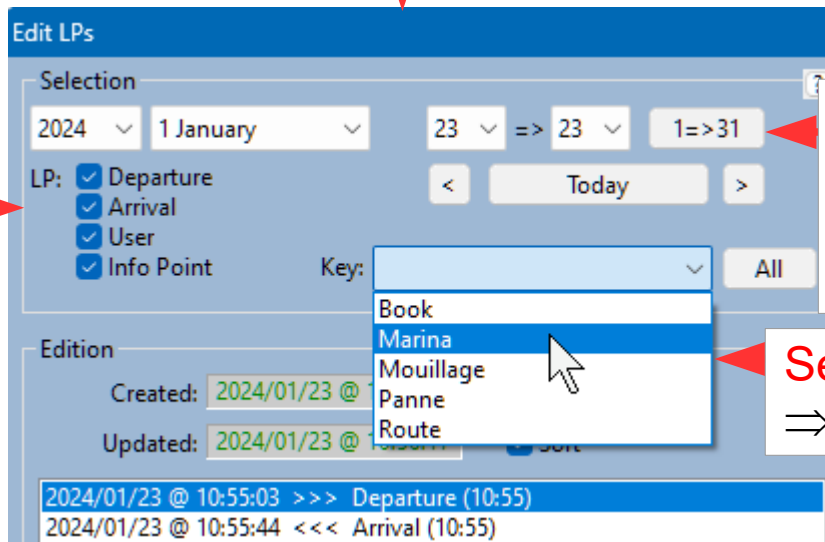
A daily trip is defined as one or more legs

Click to create an LP (4 possible types)

- Start ⇒ Departure of a leg
- Stop ⇒ Arrival of a leg
- User ⇒ User LP at any time on a leg
- Info ⇒ Anywhere on the world !

Log Points selection window

- ⇒ To modify your LP comments and observation
- ⇒ To publish for Google Earth (KMZ), OpenCPN (GPX) or eBook (ePub)



Check LP type(s)
⇒ One or more

Select one or many date(s)

- ⇒ Year, Month, Day(s)
- ⇒ Today
- ⇒ Previous/Next days

Select a kind of Log Point

⇒ User defined

GPS & Engine logs

Ship & navigation

Anchorage

The screenshot shows the 'Observations editor' window with the following fields and options:

- Log GPS:** A text input field.
- Motors(s):** Two input fields for motor hours (1 and 2).
- Temperature midity:** A field with '0.0 °C' and a '#na' dropdown.
- Pressure:** A field with '#na hPa'.
- Crew:** A tree view icon.
- Event:** A dropdown menu with 'Sail change' selected.
- Waves:** A dropdown menu with '0.1-0.5 m' selected.
- Sea state:** A dropdown menu with 'Smooth (2)' selected.
- Sailing state:** A dropdown menu with 'Motoring' selected.
- Nebulosity:** A dropdown menu with 'Dry' selected.
- Visibility:** A dropdown menu with 'Very good' selected.
- Sails:** A dropdown menu with 'All sails' selected.
- Reefing:** A dropdown menu with 'No reef' selected.
- Bottom:** A dropdown menu with 'Hard mud' selected and a checked 'Weed' checkbox.
- Holding:** A dropdown menu with 'Very good' selected and an open list showing options: '#na', 'Very good', 'Good', 'Medium', 'Bad', 'Very bad'. A mouse cursor is pointing at 'Very good'.
- Cloud cover:** A dropdown menu with '2/8' selected.
- Clouds:** A list of cloud types with checkboxes: Cirrus (checked), Co stratus (checked), Co cumulus (checked), Alto- (unchecked), Alto Stratus (unchecked), Alto Cumulus (unchecked), Low (unchecked), Stratus (unchecked), Strato Cumulus (unchecked), Cumulus (unchecked), Nimbo- (unchecked), Nimbostratus (unchecked), Cumulonimbus (unchecked), Thunderstorm (unchecked).

Air & pressure data

Sea state & wave data

Air state

Clouds

User comments edition

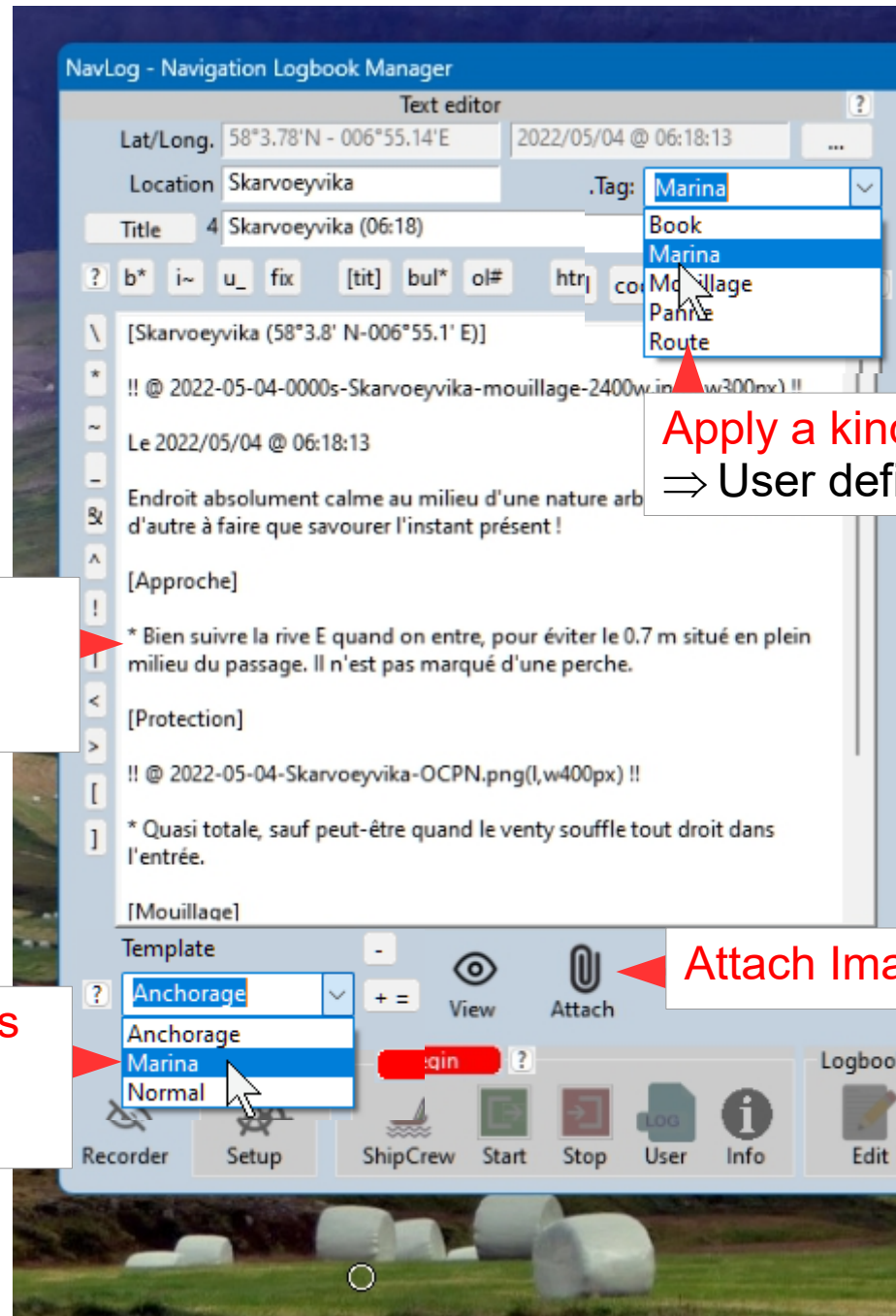


Text editor

- ⇒ Edit this simple text
- ⇒ Quick & easy to do

Predefined comments templates

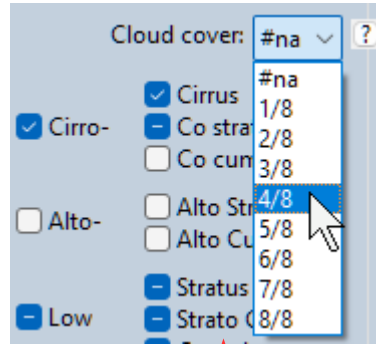
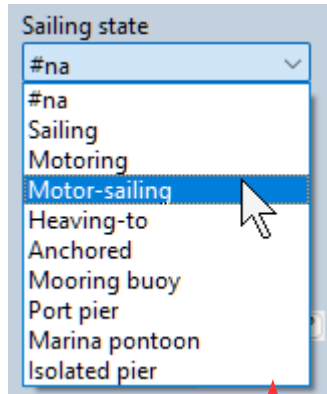
- ⇒ Easy comments editing
- ⇒ User defined



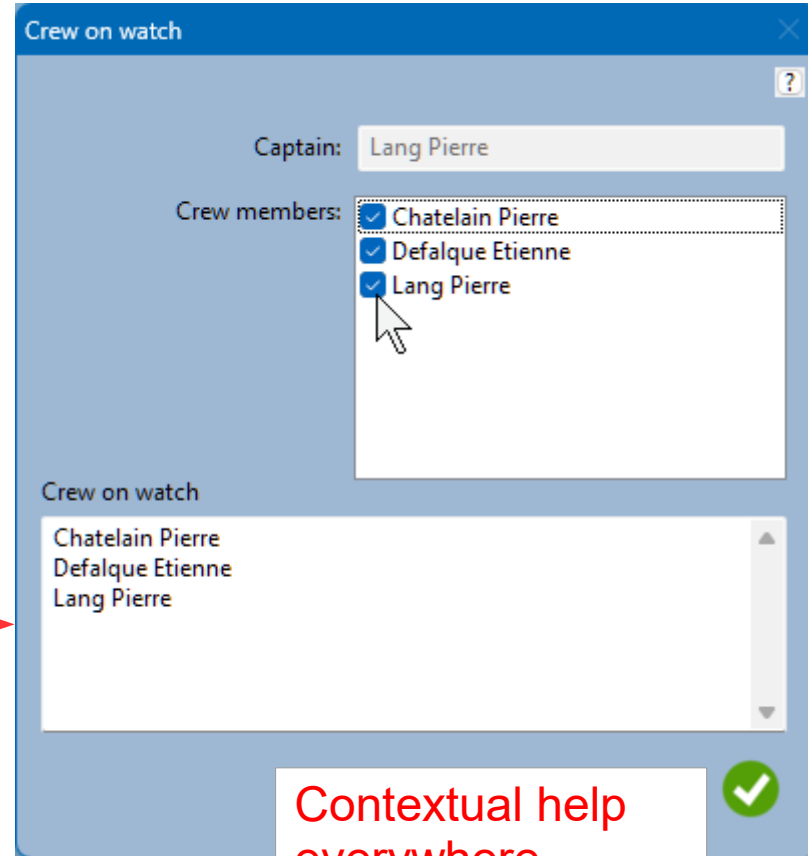
Apply a kind to Log Points
⇒ User defined

Attach Image & Internet links

Userfriendly User Interface



Extensive use of the mouse
⇒ Easy to use



Contextual help
everywhere
⇒ No user guide
⇒ Userfriendly

A unique simple
main button bar




Logbook in Google Earth & OpenCPN

Kalvaag
DateTime: 2022/05/30 @ 13:19:33
61°45.92 N - 004°52.63 E
GPS Log :
Event : #na

Kalvaag (61°45.92' N-004°52.63' E)
Le 2022/05/30 @ 13:19:33

Amarrage



Le long du quai du restaurant ou mieux, sur le ponton en face du restaurant, car il y a plus d'eau.

Attention : la bordure en bois n'est pas faite pour amarrer un bateau. Il faut passer les aussières autour des poutrelles métalliques qui soutiennent le quai. Il y a de gros cordages installés à cet effet.

Attention le long des quais. Ce sont plus des promenades que des quais. Par endroit, il y a peu d'eau à causes d'enrochements.

Enregistrement

Wind : 1 Beaufort from S - Light air (1-3)
App Wind: AWA=-66°, AWD=192°, AWS=3.2 kt
TrueWind: TWA=-66°, TWD=192°, TWS=3.2 kt

Water : depth=4.3 m, temp=48.9°C

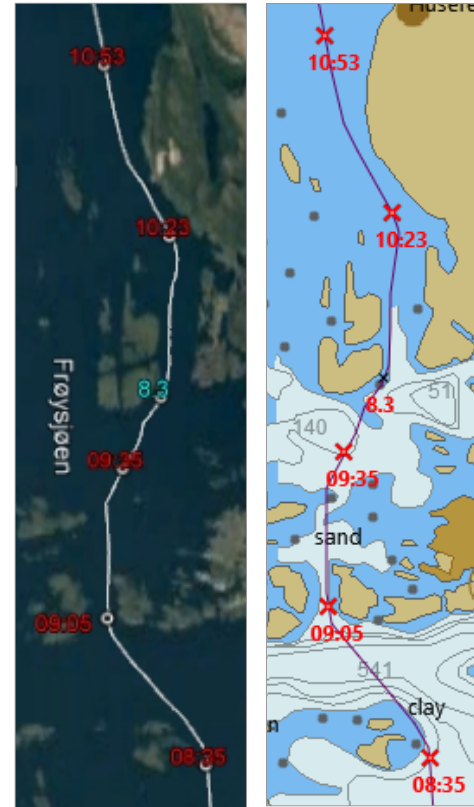
Heading : HDG=258°, STW=0.0 kt, Port tack
Route : COG=0°, SOG=0.0 kt, Drift=-258.0°, VMG=0.0 kt
Compas : variation=0.0°, deviation=0.0°

Current : TCD=±0.0°, TCS=±90.0 kt, Leeway=±0.0°

Observations

Google Earth

- ⇒ Integrated images & links
- ⇒ All LPs clickable



OpenCPN 5.2.4-6b314e6

Waypoint Properties, Layer: 2022-05-...

Basic	Description	Extended
[Kalvaag]		
2022/05/30 @ 13:19:33 - 61°45.92 N - 004°52.63 E		
GPS Log: 1079 (-)		
Event: #na		
1 Beaufort from S - Light air (1-3)		
[Kalvaag (61°45.92' N-004°52.63' E)]		
Le 2022/05/30 @ 13:19:33		
[Amarrage]		
[see link: 2022-05-30-0084-Kalvaag-quai-restaurant-2400w.jpg]		
Le long du quai du restaurant ou mieux, sur le ponton en face du restaurant, car il y a plus d'eau.		
Attention : la bordure en bois n'est pas faite pour amarrer un bateau. Il faut passer les aussières autour des poutrelles métalliques qui soutiennent le quai. Il y a de gros cordages installés à cet effet.		
Attention le long des quais. Ce sont plus des promenades que des quais. Par endroit, il y a peu d'eau à causes d'enrochements.		
OBSERVATION		

OK Cancel

OpenCPN

- ⇒ Images as links
- ⇒ All LPs clickable

LogBook as eBook (ePub format)

2022
May 2022
04
05:04:17 | Korshavn
06:18:13 | Skarvoeyvika
10:36:04 | Skarvoeyvika
11:57:19 | Farsund

Hierarchical menu



Le 2022/05/04 @ 06:18:13
Endroit absolument calme au milieu d'une nature arborée. Il y a une

Bien suivre la rive E quand on entre, pour éviter le 0.7 m situé en plein milieu du passage. Il n'est pas marqué d'une perche.

Protection



- Quasi totale, sauf peut-être quand le vent souffle tout droit dans l'entrée.

Mouillage

- Mouillage par 7 à 8.5 m

Ressources

- Il n'y a rien !

10:36:04 | Skarvoeyvika

NMEA recording	Observations
DateTime: 2022/05/04 - 10:36:04 Position: 58°3.78 N - 006°55.15 E Route : COG=0°, SOG=0.0 kt kt Heading : HDG=217°, STW=0.0 kt kt Navigat.: VMG=0.0 kt°, Drift=-217.0°° Current : DOC={DOG}°, SOC={SOC} kt App Wind: AWA=12°, AWD=228°, AWS=11.9 kt kt, from Starboard TrueWind: TWA=0°, TWD=0°, TWS=0.0 kt kt 0 Beaufort from N - Calm (0-1) Water : depth=8.4 m m, temp=48.9°C°C	Sailing : Etat=#naVoiles=#na Atmosph.: Temp=0.0°HR=0.0°Pressure=0.0 hPa Cover: 2/8Nébulosité=#naVisibilité=#naNo thunderstorm Sea : Vagues=#naMer=#na Anchor. : Fond=Hard mudno weedTenu=#na Clouds : High : #na Alto : #na Low : #na Nimbo: #na

11:57:19 | Farsund

NMEA recording	Observations
----------------	--------------

Recorder NMEA data
⇒ Coloured background
⇒ (optional output)

```
Heading : HDG=335°, STW=0.0 kt kt
Navigat.: VMG=91.4 kt°, Drift=-335.0°°
Current : DOC={DOG}°, SOC={SOC} kt
App Wind: AWA=-177°, AWD=158°, AWS=8.3
kt, from Port
TrueWind: TWA=-119°, TWD=216°, TWS=4.7
kt kt
2 Beaufort from SSW - Light
breeze (4-6)
Water : depth=1.8 m m, temp=48.9°C°C
```

```
2/8Nébulosité=#naVisibilité=#naNo
thunderstorm
Sea : Vagues=#naMer=#na
Anchor. : Fond=Hard mudno weedTenu=#na
Clouds : High : #na
Alto : #na
Low : #na
Nimbo: #na
```

Farsund - 58°5.5' N-006°48.5' E

2022/05/04 - 11:57:19



Farsund

Farsund est un endroit calme en cette saison. Le port semble surdimensionné. La petite ville est charmante. Maison en bois.

Approche

Je suis arrivé en passant entre Uroey et Vester Langoey. Le balisage est bon. Pour quitter et aller vers l'ouest, je projette de passer entre Tjuvholmen et Prestoey.

Protection

Le quai visiteur (à la position indiquée) est orienté NNW-SSE. Pas de souci avec un vent fort de N/NW.

Amarrage



quai visiteur

eBook

⇒ Same information as in GoogleEarth & OpenCPN
⇒ Can be printed in PDF format

Ship and Crew management

Ships profiles database

Crew profiles database

Phone number

One click to send an email

Crew on watch
Recorded into Log Points

Crew list

- Ship Thoe (alias Thoe)
- Crew: 1 captain = crew of 2

Captain

Lang Pierre	Function on board:	Propriétaire/Captaine
Avenue	Birthdate:	24/05/1951
1190 I	City:	Uccle
Belgie	Country:	Belgium
Phone	Nationality:	Belgian
Email	ID card#:	591-9270976-12
	- Issued:	Forest - Belgium
	- Validity:	12/03/2014 to 12/03/2024
	Passport#:	#na
	- Issued:	#na to #na
	- Validity:	#na to #na
	Nav. License#:	ICC FC01 I CMS1913831
	Radio License#:	201924433

Crew #1 (ship Thoe)

Chatelain Pierre	Function on board:	#na
Avenue	Birthdate:	Birthdate
ZIP o	City:	Birth city
Belgie	Country:	Birth country
Phone	Nationality:	Nationality
Email	ID card#:	#na
	- Issued:	#na
	- Validity:	#na to #na
	Passport#:	#na

Ship Thoe (alias Thoe)

1 captain = crew of 2

Registrations

Flag	Home port	Registration	Owner(s)
Belgium	Brussels	B408204 (20/03/2027)	Lang Pierre
MMSI	Callsign	ATIS code	
205318310	OR3183	9205183183	
Number of masts	Hull color		
1	Light blue		

Insurance

Insurance Company	Contract #
Pantaenius	RC:121520873-11 (+ProtJur & IndAcc)
Phone	Web
+377 97 70 12 0	www.thoe.be

Specifications

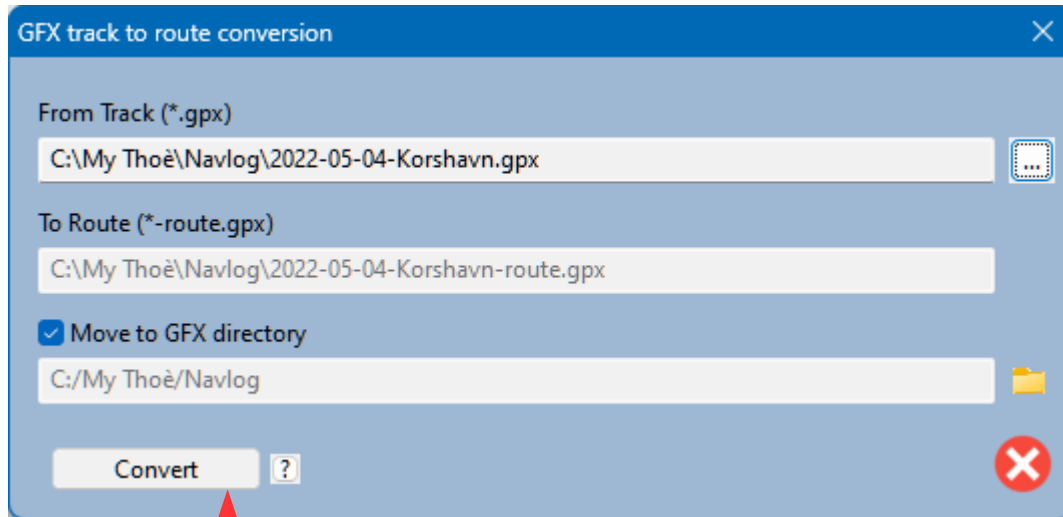
Shipyard	Model	Hull number	Year
Technologie Marine	IRISoR 40	1	2001
Length	Width	Displacement	LOA
12.7	4.0	10.5	13.20
Draught	Air Draft		LWL
1.5	19.0		12.2

1 Engine(s)

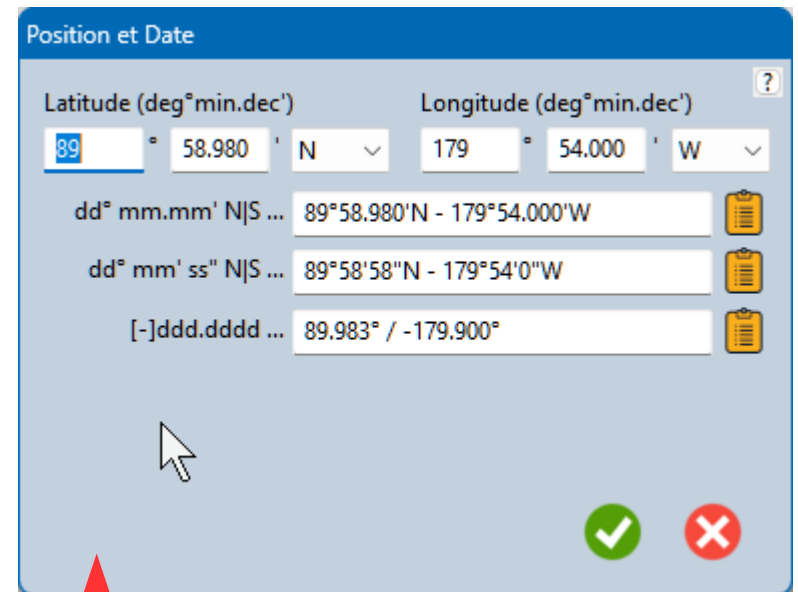
Manufacturer	Model	HP	S/N
1. Volvo Penta	MD2040	38	#na
2. #na	#na	#na	#na

Profiles published as HTML files
⇒ Print it from the Internet browser
⇒ Easy for Customs and Immigration

GPX Track to Route & Coordinates format conversions



GPX track to route conversion
(OpenCPN formats)



Coordinates format conversion
⇒ Any of 3 formats to the 2 others
⇒ Buttons to copy to the Clipboard

Application Launcher & Archiving

Lanceur

1> Apps

- 1> Google Earth
- 1> NavLogTool
- 1> NavMonPc
- 1> *OpenCPN ***
- 1> *ZyGrib ***

2> Text

- 2> *\$ Logbook ***
- 2> A L'Aveuglette 2022
- 2> La Route 2021
- 2> La Route de Thoè 2022
- 2> LogBook de Thoè

3> Calc

- 3> La Route de Thoè
- 3> Maintenance de Thoè
- 3> Suivi du site de Thoè

Name: ZyGrib Run once Bring to top

Program: C:\TOOLS\zyGrib_win\zyGrib.exe

Start in directory: C:/TOOLS/zyGrib_win

Parameter(s):

Window title: zyGrib

Type: App Text Calc Other

Application launcher

- ⇒ Run favorite programs
- ⇒ Open favorite documents
- ⇒ Sorted by document types

Archiving

Save 2022 Restore Source folders

To: C:\My Thoè\Navlog

Data files archiving

- ⇒ Save disk space
- ⇒ Data security